

C# Kaval
Bb Gajda
Bb/Eb Tambura

Doce Doce

(a.k.a. Pirinsko Oro)

Macedonian Traditional
Transcribed by J. Ruiz

(Gajda 1st Time/Kaval on 1st D.C./Tutti on 2nd D.C.)

Am G Am

5 Tutti Am G Am D.C. Fine

The first staff is in 3/8 time, starting with a treble clef and a key signature of one sharp (F#). It contains a melodic line with notes G4, A4, B4, C5, B4, A4, G4, F#4, E4, D4, C4. The second staff starts with a measure rest, followed by notes G4, A4, B4, C5, B4, A4, G4, F#4, E4, D4, C4. It ends with a double bar line and the word 'Fine'.

(1st Time Tambura & Gajda/2nd Time Tambura & Kaval)

D

The third staff is in 3/8 time, starting with a treble clef and a key signature of one sharp (F#). It contains a melodic line with notes G4, A4, B4, C5, B4, A4, G4, F#4, E4, D4, C4. It ends with a double bar line.

Gajda A

The fourth staff is in 3/8 time, starting with a treble clef and a key signature of one sharp (F#). It contains a melodic line with notes G4, A4, B4, C5, B4, A4, G4, F#4, E4, D4, C4. It ends with a double bar line.

Gajda A

The fifth staff is in 3/8 time, starting with a treble clef and a key signature of one sharp (F#). It contains a melodic line with notes G4, A4, B4, C5, B4, A4, G4, F#4, E4, D4, C4. It ends with a double bar line.

Kaval G Am

The sixth staff is in 3/8 time, starting with a treble clef and a key signature of one sharp (F#). It contains a melodic line with notes G4, A4, B4, C5, B4, A4, G4, F#4, E4, D4, C4. It ends with a double bar line.

Am D.C.

The seventh staff is in 3/8 time, starting with a treble clef and a key signature of one sharp (F#). It contains a melodic line with notes G4, A4, B4, C5, B4, A4, G4, F#4, E4, D4, C4. It ends with a double bar line.

Kaval Em C D Em

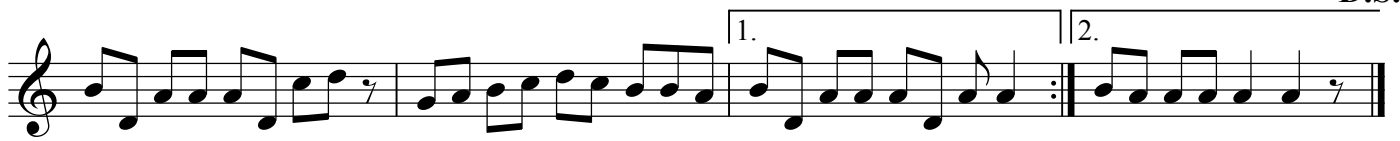
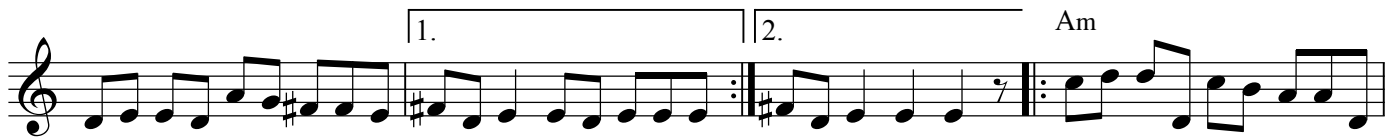
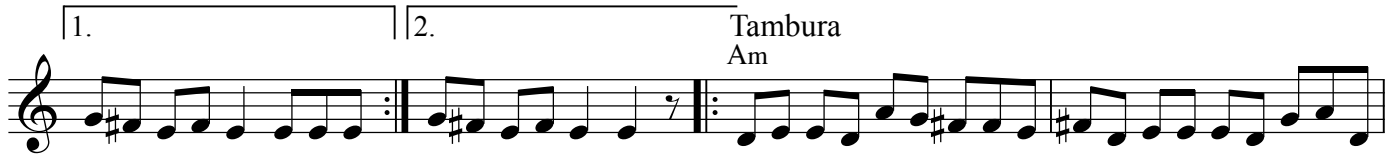
The eighth staff is in 3/8 time, starting with a treble clef and a key signature of one sharp (F#). It contains a melodic line with notes G4, A4, B4, C5, B4, A4, G4, F#4, E4, D4, C4. It ends with a double bar line.

Kaval Em D Em

The ninth staff is in 3/8 time, starting with a treble clef and a key signature of one sharp (F#). It contains a melodic line with notes G4, A4, B4, C5, B4, A4, G4, F#4, E4, D4, C4. It ends with a double bar line.

Tambura

Am



D.S.