

1/2

Mendo 2023
Nikola Kolar
Bitov

graovsko horo for bitov ans. gadulka

Intro

Handwritten musical notation for the Intro section. It consists of two staves. The first staff is in treble clef with a 4/4 time signature and contains a sequence of eighth notes with some triplets. The second staff is in bass clef and contains a sequence of eighth notes. A double bar line is present between the two staves.

1 3-3

Handwritten musical notation for the first system. It consists of two staves. The first staff is in treble clef and contains a sequence of eighth notes with a triplet. The second staff is in bass clef and contains a sequence of eighth notes. Handwritten annotations include 'tr' above the first measure and 'M1' above the second measure.

tr

Handwritten musical notation for the second system. It consists of two staves. The first staff is in treble clef and contains a sequence of eighth notes with a triplet. The second staff is in bass clef and contains a sequence of eighth notes. Handwritten annotations include 'tr' above the first measure and 'M1' above the second measure.

tr

Handwritten musical notation for the third system. It consists of two staves. The first staff is in treble clef and contains a sequence of eighth notes with a triplet. The second staff is in bass clef and contains a sequence of eighth notes. Handwritten annotations include 'tr' above the first measure and 'M1' above the second measure.

M1

M1

M1

Handwritten musical notation for the fourth system. It consists of two staves. The first staff is in treble clef and contains a sequence of eighth notes with a triplet. The second staff is in bass clef and contains a sequence of eighth notes. Handwritten annotations include 'M1' above the first measure, 'M1' above the second measure, and 'M1' above the third measure.

2

M1

Handwritten musical notation for the fifth system. It consists of two staves. The first staff is in treble clef and contains a sequence of eighth notes with a triplet. The second staff is in bass clef and contains a sequence of eighth notes. Handwritten annotations include 'M1' above the first measure and 'M1' above the second measure.

M1

M1

V M1

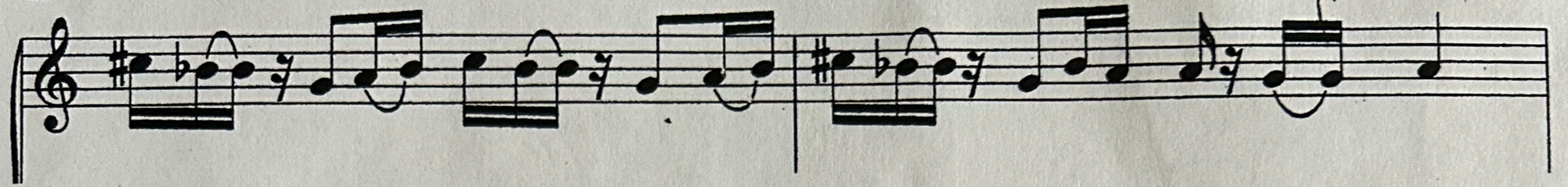
M1

M1

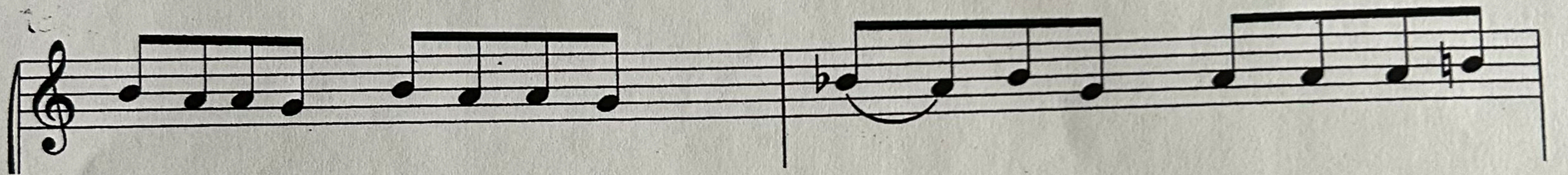
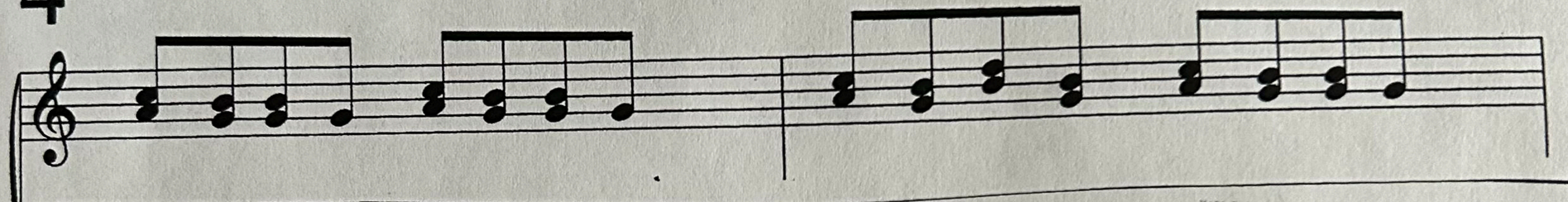
M1

Handwritten musical notation for the sixth system. It consists of two staves. The first staff is in treble clef and contains a sequence of eighth notes with a triplet. The second staff is in bass clef and contains a sequence of eighth notes. Handwritten annotations include 'V M1' above the first measure, 'M1' above the second measure, and 'M1' above the third measure.

3



4



5

