

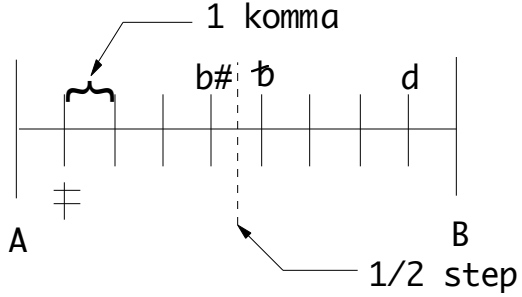
## SELECTED MAKAM SCALES GUIDE

K= Karar : Tonic or finalis

Gü= Güçlü : Dominant note

Gi= Giriş : Entry note

Y= Yeden : Leading tone



9 Kommas = 1 whole step

1 komma sharp = 1/9th above note

4 kommas sharp = 1/2k below half step

5 kommas sharp = 1/2k above half step

d = 1 k flat

b = 4 k.

b = 5 k.