

# exercise

1

ending on B with first finger

Musical notation for exercise 1, first staff. It is in 2/4 time and G-clef. The notes are: G4 (quarter), A4 (quarter), B4 (quarter), A4 (quarter), G4 (quarter), F4 (quarter), E4 (quarter), D4 (quarter). The final two notes, E4 and D4, are marked with a fermata.

Musical notation for exercise 1, second staff. It is in 2/4 time and G-clef. The notes are: G4 (quarter), A4 (quarter), B4 (quarter), A4 (quarter), G4 (quarter), F4 (quarter), E4 (quarter), D4 (quarter). The final two notes, E4 and D4, are marked with a fermata.

Musical notation for exercise 1, third staff. It is in 2/4 time and G-clef. The notes are: G4 (quarter), A4 (quarter), B4 (quarter), A4 (quarter), G4 (quarter), F4 (quarter), E4 (quarter), D4 (quarter). The final two notes, E4 and D4, are marked with a fermata.

Musical notation for exercise 1, fourth staff. It is in 2/4 time and G-clef. The notes are: G4 (quarter), A4 (quarter), B4 (quarter), A4 (quarter), G4 (quarter), F4 (quarter), E4 (quarter), D4 (quarter). The final two notes, E4 and D4, are marked with a fermata.

PREHBRUKNA PTICHKA

song

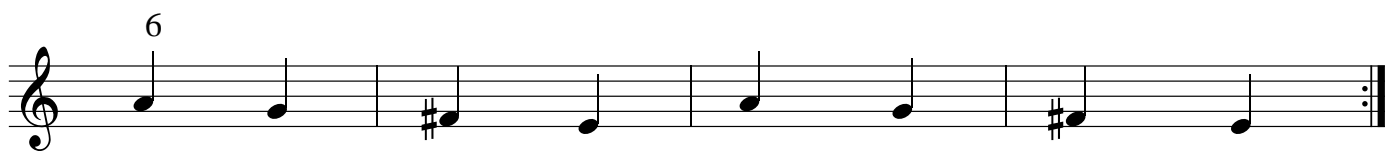
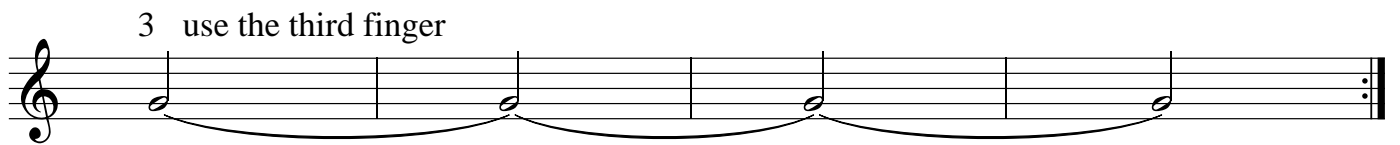
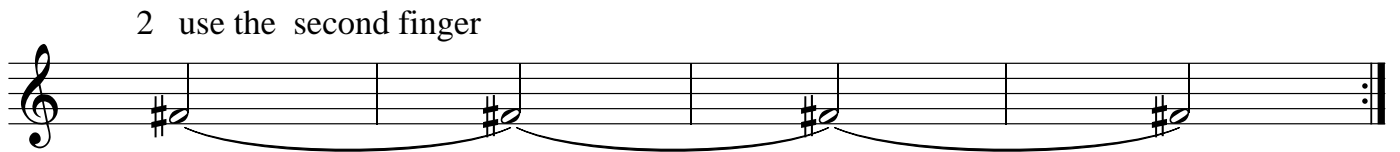
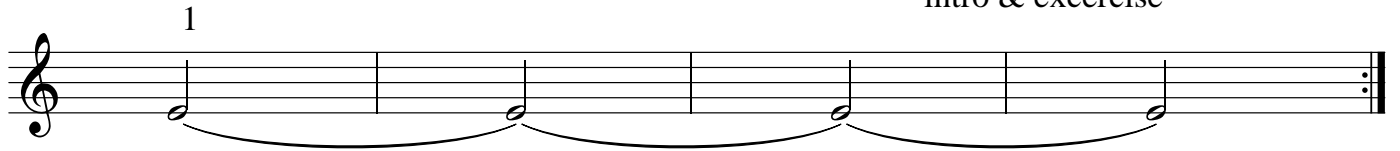
Musical notation for exercise 1, fifth staff. It is in 2/4 time and G-clef. The notes are: G4 (quarter), A4 (quarter), B4 (quarter), A4 (quarter), G4 (quarter), F4 (quarter), E4 (quarter), D4 (quarter). The final two notes, E4 and D4, are marked with a fermata.

Musical notation for exercise 1, sixth staff. It is in 2/4 time and G-clef. The notes are: G4 (quarter), A4 (quarter), B4 (quarter), A4 (quarter), G4 (quarter), F4 (quarter), E4 (quarter), D4 (quarter). The final two notes, E4 and D4, are marked with a fermata.



# midle (E) string

intro & excercise



etude

The image shows two staves of musical notation. The first staff begins with a treble clef and a key signature of one sharp (F#). The melody consists of eighth notes, with some beamed together and some tied across bar lines. The second staff continues the melody, featuring a key signature change to one sharp (F#) and ending with a double bar line and repeat dots. The notation includes various rhythmic values, ties, and accents.